



Stinger Load Monitoring Solution



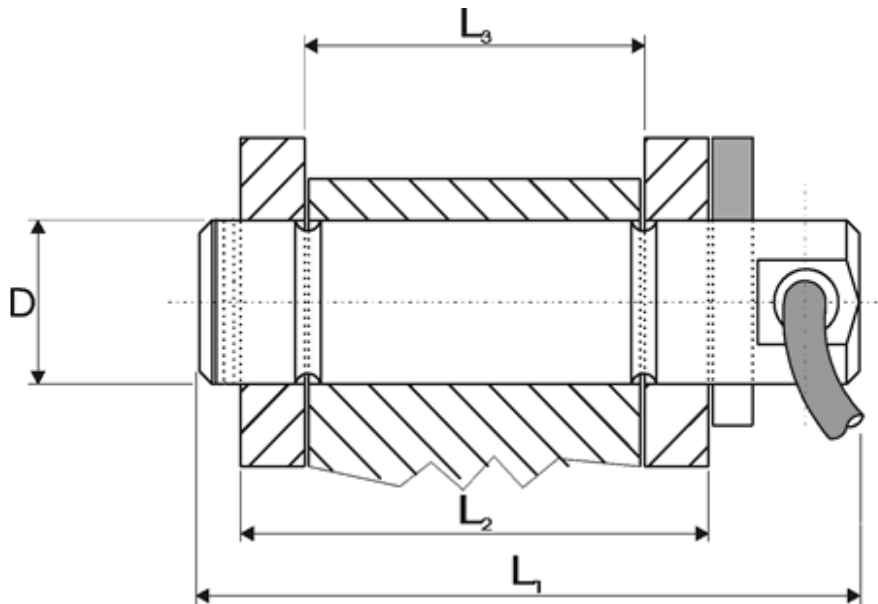
Euroload Limited offer a full solution for monitoring load on a Stinger. Our load pins are rated to 300 bar subsea use and are designed to fit your individual Stinger frame.

The load pins can be any dimension with multiple outputs. The pins can be dual gauged to give redundancy. The above pins were dual gauged and had two independent 2 wire 4-20 ma amplifiers built into the head of the pin.

We supply all the certified cables and moulded junctions. The moulded junctions are excellent for ease of installation and replace the need for subsea junction boxes.

Cables can be supplied to any length to suit your individual requirements and moulded junctions can be configured to suit. We can offer a fast turnaround from design to delivery of a complete system within 5-6 weeks.

Euroload Limited offer a full repair, calibration, refurbishment service for most manufacture's load pins.



RATED LOAD	1.0 TO 2000 TONNE
PROOF LOAD	150 % OF RATED LOAD
SAFETY FACTOR	MIN 5:1 DEPENDING ON DESIGN UP TO 10:1
OUTPUT	2 wire 4-20 ma. Optional Mv/v or telemetry
INSULATION RESISTANCE	>2G OHM
OPERATING RANGE	-40 TO +85 DEG C
CABLE LENGTH	CUSTOMER TO SPECIFY

Load measuring pins are the simplest and most reliable method of measuring loads. They can be used in a great number of situations, including the most severe environments – sub sea, mining offshore and heavy industry. They can be incorporated easily and economically into the load path by replacing any existing bearing pin.

Typical applications, rope sheaves, fairleads winches, cranes, mooring systems and many more.

Options available; various output types, millivolt, milliamp, telemetry. Dual strain gauging. Dual outputs of different types, dual axis output, sub sea sealed, gland output or connectors, customer specifies connectors.

